

**\$85,000,000**  
**Capital Project**  
 There is no planned increase in the tax levy as it pertains to this capital project.\*

## Capital Improvement Project

*Focus on Safety and Security • Zero Tax Impact*

### Building Our Future

All school districts undergo a Building Condition Survey, a New York State Education Department (NYSED)-mandated facilities assessment, that serves as a guideline to focus on key infrastructure improvements for the district that fall outside the scope of the district's annual operating budget. Capital improvement projects allow the district to address repairs that can maximize state aid and the use of capital reserves. As always, health and safety needs remain a top priority. The board has adopted a resolution for the community consideration as outlined in this newsletter. It addresses the following questions:

#### Are these improvements really necessary?

Webster CSD's last Building Condition Survey (BCS) was delayed in 2020 due to the pandemic and was completed in 2022. The BCS noted \$323,711,562 of repairs and improvements were needed throughout the district. These additional infrastructure improvements ensure that students can continue to learn in a safe educational environment. Not only do the proposed improvements impact students, but also the community-at-large as our schools' facilities are used as a community resource throughout the year.

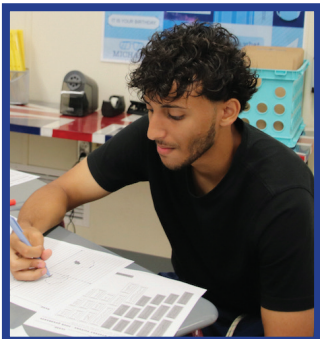
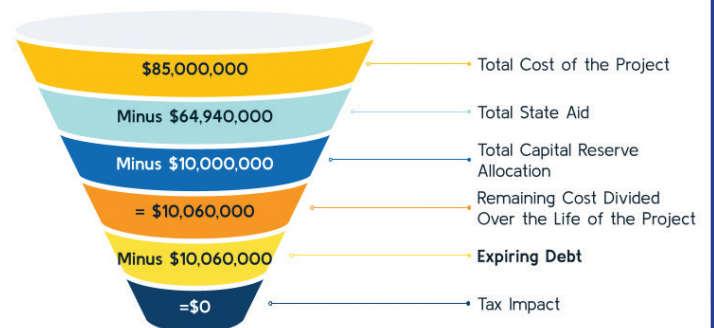
#### What makes this vote different from the December 2022 Vote?

Several items that caused a tax impact for district residents for the December 2022 capital improvement project vote have been removed from this proposed project. In particular, the previously proposed expansions to the One Webster Learning (OWL) Elementary School special education program at Schlegel Road and the OWL High School special education program at Webster Thomas High School were a significant portion of that tax impact due to state education funding rules.

In this newly proposed capital improvement project, delaying the project by one year and removing new construction (except for the OWL Middle School expansion at Willink Middle School) allows the district to delay the borrowing of necessary funds for the project in earlier years. This delay also allows for previous projects' debt to come off the books and be replaced by this newly proposed capital improvement project with no planned tax levy increase for Webster CSD residents.

*More Building Our Future  
 FAQs answered inside!*

### Getting to \$0 Tax Impact



**Wednesday, October 11, 2023 • 6 a.m. - 9 p.m.**  
 Webster Schroeder High School Gym, 875 Ridge Road  
[websterschools.org/capitalproject](http://websterschools.org/capitalproject)

# School-by-School Highlights

The proposed *Building Our Future* capital improvement project aligns with the district's ongoing commitment to provide a safe educational environment for students. Proposed improvements are highlighted by added security measures at all 11 buildings that include interior and exterior upgrades to physical spaces and communication abilities. Individual buildings will also receive improvements as outlined below.

## DeWitt Elementary School

- Reconstruct bus loop, parking lots, and turnaround
- Reconstruct asphalt sidewalks at parking lots and bus loop
- Elevator upgrade

## Klem Road North Elementary School

- Roof replacement
- Elevator upgrade

## Klem Road South Elementary School

- LED lighting and ceilings

## Plank Road North Elementary School

- Roof replacement
- Bus loop and sidewalk redesign
- Music suite renovation

## Plank Road South Elementary School

- Sidewalk replacement
- LED lighting and ceilings

## Schlegel Road Elementary School

- LED lighting and ceilings

## State Road Elementary School

- Roof replacement
- Elevator upgrade
- Asphalt sidewalk replacement near bus loop and south side of building
- Reconstruct and reconfigure northeast parking lot

## Spry Middle School

- Front entrance renovations to meet accessibility standards
- ADA entrance ramp at the west entrance off the bus loop
- Fire alarm system upgrades
- Air handling unit replacement
- Elevator upgrade
- Structural repairs
- Public address system
- Restroom renovations
- Classroom renovations
- Replace original bleachers
- Generator replacement
- Exterior storage building

## Willink Middle School

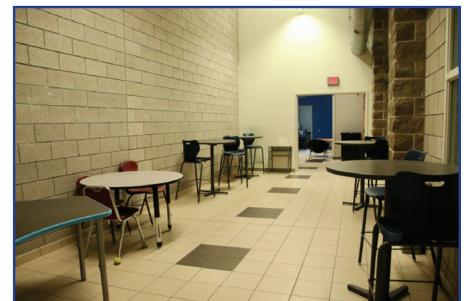
- OWL program addition
- New second floor restroom
- Emergency generator upgrade
- Elevator upgrade
- Bus parking lot reconstruction
- Parent drop-off and parking lot reconstruction
- Back entrance renovation
- Exterior storage building



**Bus Loops, Parking Lots & Sidewalks**  
*Reconstruction or renovation of bus loops, parking lots, or sidewalks at several of our schools will improve safety of traffic flow.*



**Bleacher Replacement**  
*Replacement of the original bleachers at Spry MS will provide safety features such as railings.*



**OWL Program**  
*An addition for the OWL program at Willink MS will move OWL students there out of the hallway and into new classrooms.*



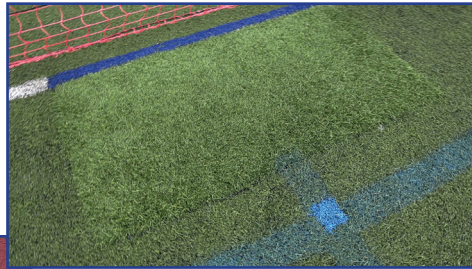
Wednesday, October 11, 2023 • 6 a.m. - 9 p.m.

Webster Schroeder High School Gym, 875 Ridge Road  
[websterschools.org/capitalproject](http://websterschools.org/capitalproject)

# School-by-School Highlights

## Webster Schroeder High School

- Fire alarm system upgrade
- Emergency lighting upgrades
- Exterior brick repair
- Emergency generator upgrade
- Elevator upgrade
- Athletic entrance parking lot reconstruction
- Classroom renovations
- LED lighting and ceilings
- Auto shop lifts and over-head door
- HVAC Control upgrades
- Stadium turf replacement



### Turf & Track Upgrades

*Original stadium turfs at both high schools and the track at Webster Thomas have worn over time and required patching.*



## Webster Thomas High School

- Main office security upgrades
- LED lighting and ceilings
- Exterior brick repair
- Faculty restroom renovations
- Emergency generator replacement
- Exterior emergency speakers and lighting
- Track replacement and field upgrades
- Stadium turf replacement



### Office Upgrades

*The existing main office at Webster Thomas HS will receive security upgrades.*

## Building Our Future FAQs

### Why is an expansion necessary for the OWL Middle School program?

The current OWL Middle School program at Willink Middle School has outgrown its physical space, with classes often spilling over into the hallway. These conditions are no longer sustainable for an optimal education experience for students, thus the proposed expansion to provide more classrooms. Additionally, under state education's current rules and regulations, state aid would be generated for this proposed expansion.

OWL is a special education program for students that integrates social emotional learning with academics and related services. It enables Webster CSD to keep our students in our buildings, instead of referring them to a program outside of the district. It provides students with the same resources that their fellow One Webster peers have -- buildings, classrooms, materials -- so when students are ready to integrate back into their home school there is less of a transition, it's more of a natural progression.

### Why is the vote in mid-October?

To clarify, the upcoming vote on Wednesday, October 11, is regarding Webster CSD's proposed capital improvement project. Under New York State law, school districts' annual budget votes and board of education elections are held on the third Tuesday in May.

The community-wide vote on Webster CSD's proposed capital improvement project is held in October because it takes approximately four to six months to complete architectural/engineering renderings for the project and then another eight to 12 months for NYSED to complete the approval process for this project. Next, an additional one to two months is needed for our district to process through the public work-bidding process, with the goal to be ready to go for a late-June 2025 construction season.

### Why are both high school stadiums receiving new turf fields?

Both stadiums still have their original turf fields from 2011. The average life expectancy for these fields is 10 years, putting the district beyond the designated time frame. By updating the fields now and with proper ongoing maintenance, we expect above-average lifespans for both fields.

\*Please note that the turfs in this proposal are the original stadium turfs and not the newer baseball turfs.

**PUBLISHED BY:**

Webster Central School District  
Janice Richardson, *President*  
Linda Dioguardi, *Vice President*  
Carole Barnabas  
Jennifer Birdsong-Ng  
Maria Cortes  
Shanna LaDelfa  
Charlie Roods, Ed.D.  
Brian Neenan, *Superintendent of Schools*  
Heather Murphy, *District Clerk*

Periodical  
Postage  
PAID  
Webster, NY  
14580



**PRODUCED BY:**

Webster Central School District  
Communications Department  
Jenifer Calus, *Editor*

**WEBSTER CENTRAL SCHOOL DISTRICT:**

Send changes to: Webster Central School District, 119 South Ave., Webster, NY 14580 Published 7 times a year. Periodical Postage Paid ISSN 0890-393X USPS Publication #671040

## What You'll Vote On

- Authorization for a capital improvement project consisting of alterations, renovations, and improvements to all 11 of the district's school buildings for a total aggregate maximum cost of \$85,000,000.
- The expenditure of \$10,000,000 from the district's existing capital reserve fund.
- Authorization for the district to borrow an amount not to exceed \$75,000,000

## Why Now?

- Completed Building Condition Survey in 2022
- Over \$300 million in work was identified to be completed with varying degrees of urgent needs
- In this newly proposed capital improvement project, delaying the project by one year and removing new construction (except for the OWL Middle School expansion at Willink Middle School) allows the district to delay the borrowing of necessary funds for the project in earlier years. This delay also allows for previous projects' debt to come off the books and be replaced by this newly proposed capital improvement project with no planned tax levy increase for Webster CSD residents.
- Provides the best and safest learning environments for our students.
- Protects property values.
- Maximizes state aid as building projects garner state aid

## Public Forums & More

The proposed capital improvement project has been publicly presented at board of education meetings that the community-at-large is invited to attend. In addition to this specialized newsletter, capital improvement project information was also shared in the annual Back to School Newsletter mailed to Webster CSD residents in August, during district presentations to each school's PTSA, and at in-person community forums held September 21 and 28 that were live streamed. A recording of the forum may be viewed at [websterschools.org/capitalproject](http://websterschools.org/capitalproject).

Community members are encouraged to visit the district's web page dedicated to this proposed project ([websterschools.org/capitalproject](http://websterschools.org/capitalproject)). Webster CSD residents may receive periodic communications from the district regarding this capital improvement project and other important information, by joining the Webster CSD News and Information community group. For details see the news story regarding the proposed project at [www.websterschools.org](http://www.websterschools.org).

### Vote Wednesday, October 11, 2023

6:00 a.m. - 9:00 p.m. at

Webster Schroeder High School gym, 875 Ridge Road

- that is not accessible in an operating budget.
- Provides for major capital expenditures that are not part of the annual operating budget. This approach also reduces construction costs through bulk purchasing.

**Absentee Ballots** -- If you are unable to vote in person on Wednesday, October 11, 2023, you may request an absentee ballot by contacting the district clerk's office at (585) 216-0001 or email your request to [Heather\\_Murphy@webstercsd.org](mailto:Heather_Murphy@webstercsd.org).  
**Voter Eligibility** -- Qualified voters must be a citizen of the United States of America, 18 years of age or older, and a resident within Webster CSD for a period of 30 days preceding the date of the vote. Proof of residency may include the following valid and current documents: New York State driver's license, New York State non-driver identification card, utility bill, or voter registration card. Voters shall also be required to provide their signature.